

## What is the MSCP?

The Merton Safeguarding Children Partnership is a group of people from different agencies who work together proactively to promote the welfare of children under the Children and Social Work Act 2017.

WORKING TOGETHER PROACTIVELY



# MSCP Annual Report 2022-2023

## OUR FOUR PRIORITIES



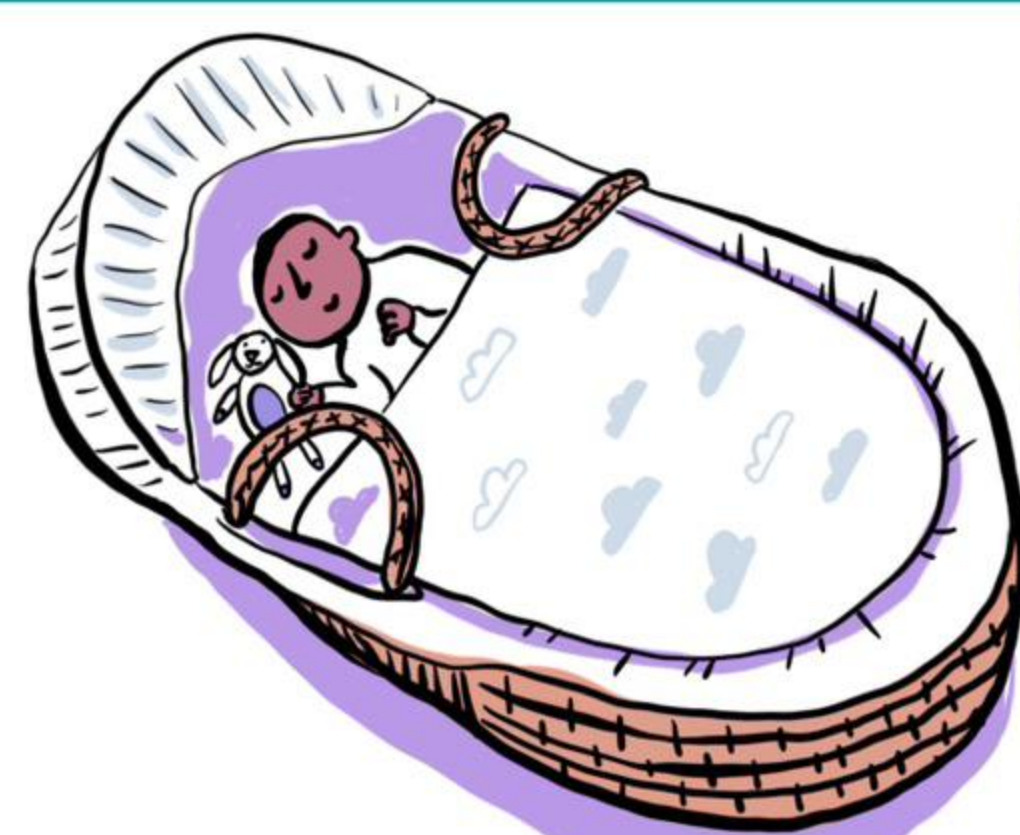
## What is the MSCP Annual Report?



A yearly report to tell people what we have achieved, what difference we have made to children, and what we will do next.

Strong Leadership &

Strong Partnership

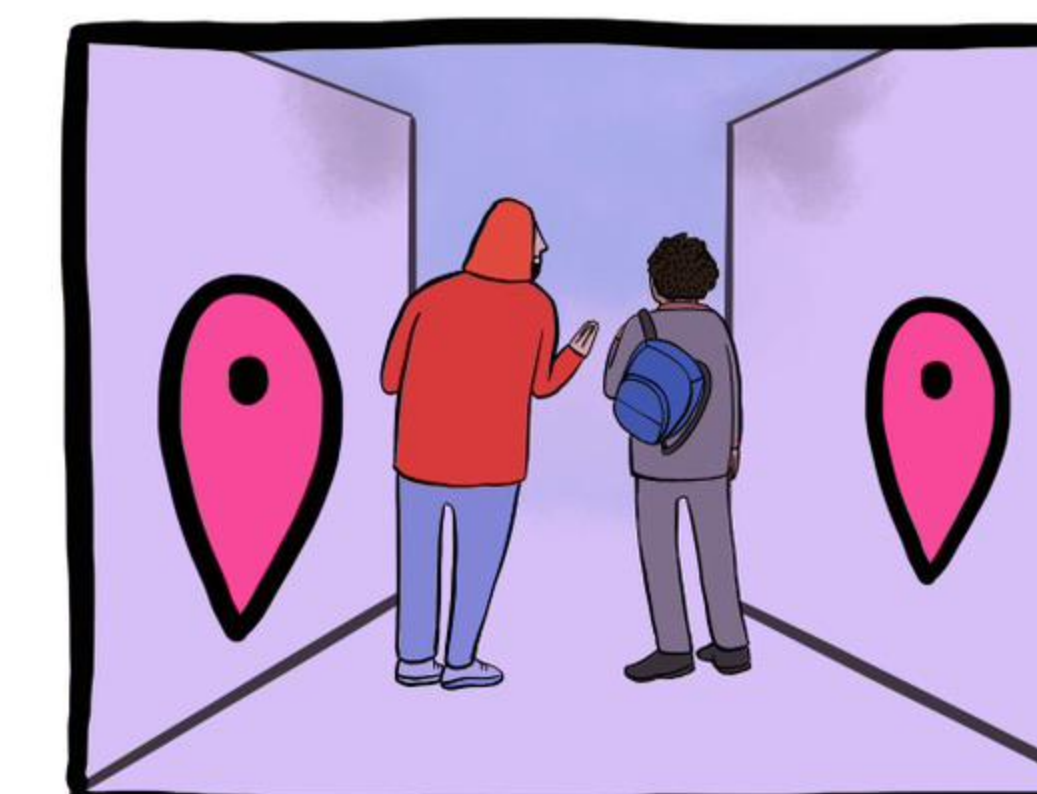


Early help and Neglect



Domestic Abuse &

Think Family



Contextual Safeguarding

FREE SAFEGUARDING TRAINING

Trained 792 multi-agency delegates

Delivered across many themes

Robust monitoring through our subgroups



Been held to account by our Scrutineers



Completed timely learning reviews

& embedded actions



Launched **ICON** programme for new parents

200+ professionals trained

Activity to increase school attendance



MENTAL HEALTH TOOL FOR SCHOOLS



TRAINING & AWARENESS RAISING

"No Recourse to Public Funds"

Effective Support for Families



FAMILY HUB

Transformation

WHAT WE HAVE DONE



Communication of domestic abuse pathways and support services



Clare's Law disclosure scheme

Directory for child victims

Secured funding for 2 new domestic abuse programmes



Perpetrator interventions

Joint Domestic Abuse Safeguarding Conference with Adults Board

Learning from the Lived Experience of Trauma from Child to Adult

Speakers with lived experience

Contextual Safeguarding audit



Improved response for young people facing risk outside their home



Safety planning with families



Location mapping

Developed new policies and guidance



WE WILL CONTINUE:



Reviewing the impact of our work with children and families and making continuous improvements



LEARNING CULTURE

STRENGTHENING OUR TRAINING OFFER



IMPROVING OUR DATA MATURITY



Aligning our work with the Adults' Board



Think Family

& Transitional Safeguarding

Drawn by Sandra Howgate